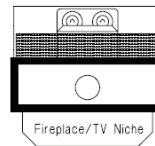
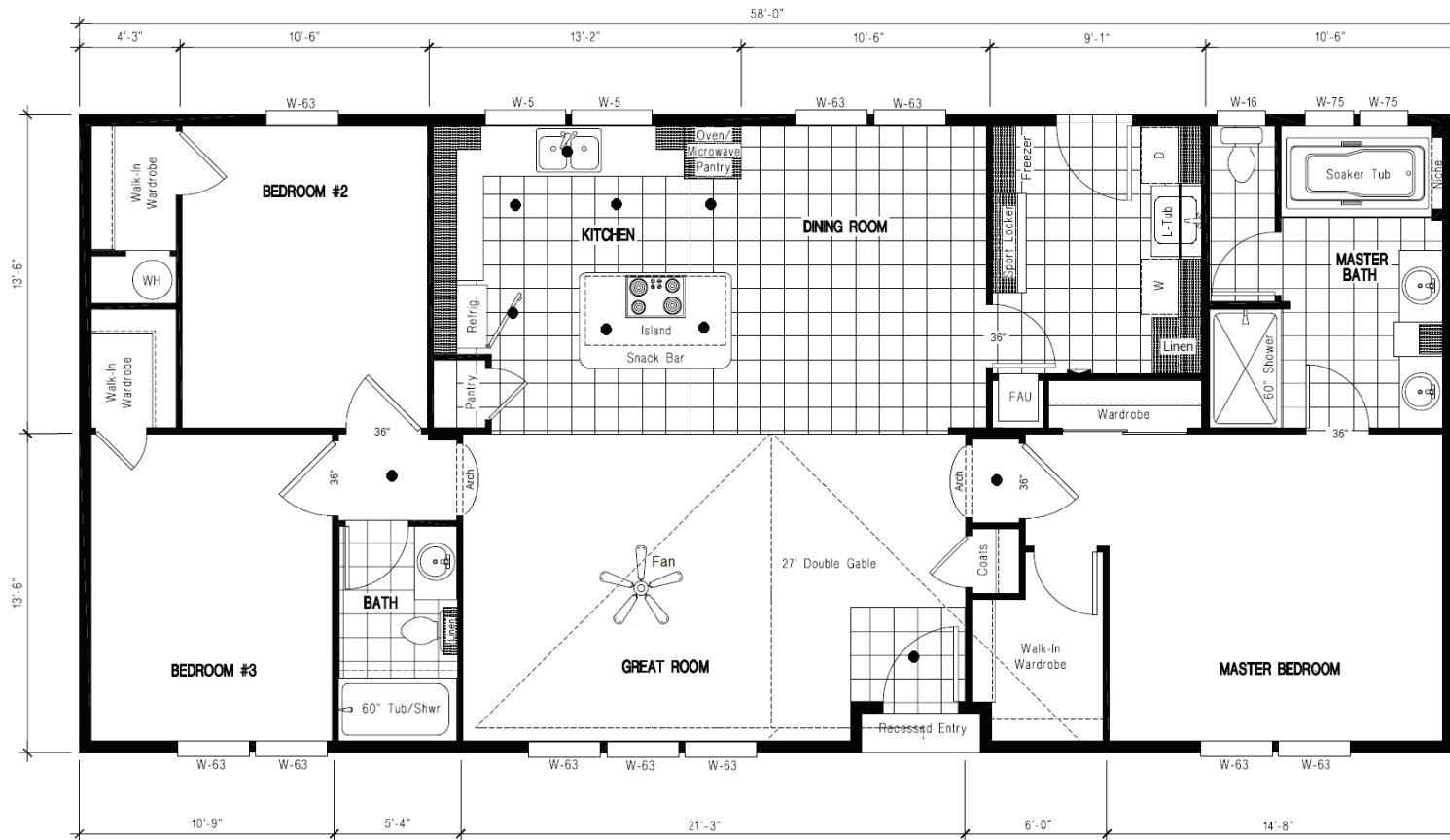


GSP 581F 27x58 1,485 sq. ft.

PLATINUM SERIES



OPT. FIREPLACE

PLATINUM SERIES 27x58 GSP 581F
THREE BEDROOM, TWO BATH - 1,485 SQ. FT.



Columbia
MANUFACTURED HOMES

1361 West 2nd Street, The Dalles, OR 97058 • Phone: 541-296-7070 • Toll free: 877 856-4663
 Email: homes@gorge.net • Website: www.columbiamfghomes.com



Golden West



THE PLATINUM STANDARD



PLATINUM STANDARD FEATURES

EXTERIOR FEATURES

- Energy Star / Eco-Green
- Shingles – 25yr
- Roof Load – 30#
- Eaves 10” (30’ wide) 14” (27’ wide)
- Roof Pitch – 3:12
- 4” Set-Back Frame
- Interior Walls, 2x4
- Exterior Wall, 2x6 16” OC
- Floor Joist, 2x8 16” OC
- Painted Front Door
- Hose Bib, (2) / GFI Exterior, (2)
- 9-Lite Rear Door (Per Plan)
- Lap / Board & Batt Siding T/O
- Window Trim 5/4”
- Double Gable 27’ (Per Model)
- Recessed Entry (Per Model)
- Whole House Wrap
- Low-E / Argon Dual Pane Windows

KITCHEN FEATURES

- Stainless Steel Appliance Package
- Stainless Steel Sink – 9” Deep
- Faucet Pull-Out Single Lever
- Walk-in Pantry (Per Model)
- Ribbed Pantry Door (Per Model)
- Glass Tile Back Splash (Level #3)
- Ceramic Edge
- Recessed Can Lights (Per Model)
- Fire Extinguisher

MASTER BATH FEATURES

- Lavy Cabinet Height 36”
- Towel and Tissue Holders
- Double China Sinks
- Bank of Drawers & Linen Storage
- Ceramic/Glass B-Splash (Level #1)
- Ceramic Edge
- 60” Fiberglass Shower w/ Enclosure
- Privacy Toilet Area (Per Model)
- Soaking Tub (Per Model)
- Shut-Off Valves, Toilets and Sinks

GUEST BATH(S) FEATURES

- Lavy Cabinet Height 36”
- Towel and Tissue Holders
- China Sink
- Bank of Drawers & Linen Storage
- Ceramic/Glass B-Splash (Level #1)
- Ceramic Edge
- 60” Fiberglass Tub/Shower
- Curved Shower Rod
- Shut-Off Valves, Toilets and Sinks

Due to our continuous improvement efforts we reserve the right to change standard features, prices, materials and specifications without notice or obligation.

UTILITY FEATURES

- AC Ready
- Water Heater 50gal
- Whole House Water Shut Off
- Perimeter Heat Ducts
- In-Floor Heat Duct Crossovers
- Sports Locker (Per Model)
- Craft/Desk Area (Per Model)
- Base Cabinet w/Laundry Tub
- Washer/Dryer O/H Cabinets
- Freezer O/H Cabinet (Per Model)
- Broom Cabinet (Per Model)
- Ceramic/Glass B-Splash (Level #1)
- Ceramic Edge

MISCELLANEOUS FEATURES

- Interior Doors – 36” (Where Available)
- Interior Doors - 2-Panel T/O
- Door Hardware – Nickel T/O
- Cabinets - Flat Panel Ashley Alder
- Cabinet Hardware – Nickel T/O
- Heavy Duty Roller Drawer Guides
- Toe Kick Heater Register
- Ceiling Air Returns – Bedrooms
- Wood Shelf and Pole
- Round Drywall Corners
- Baseboards T/O 4”
- Side Panels / Valance (Per Model)
- Carpet – New Day (FHA) 25oz
- Carpet Pad – 7#
- Ceiling Fan (1), (Living/Great Rm)
- Interior Lights, Nickel T/O