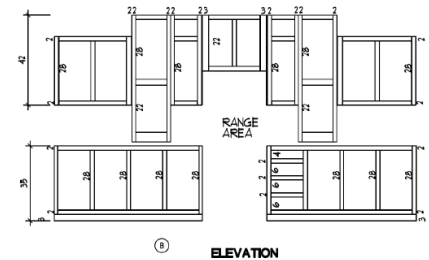
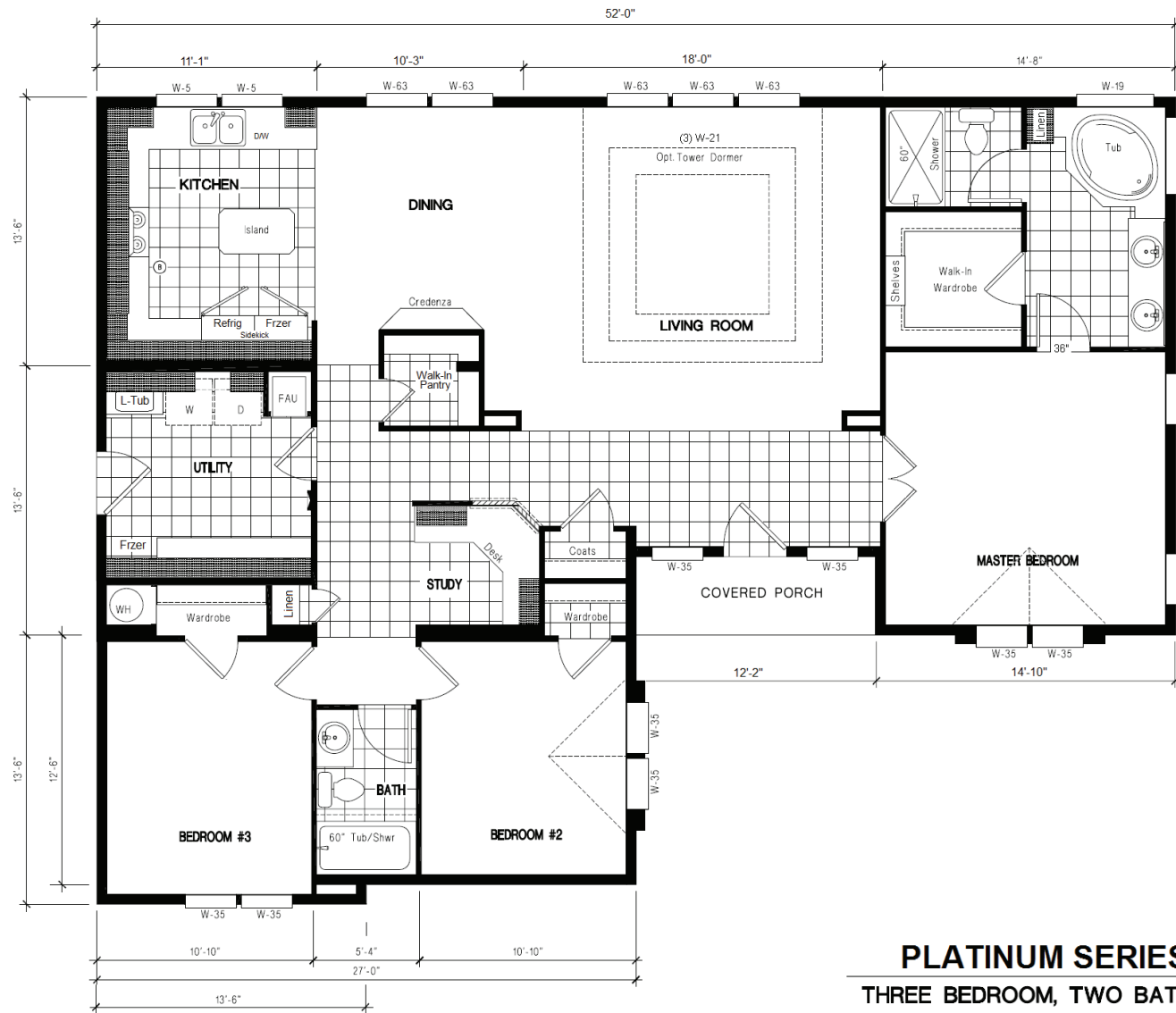


GSP 542K 40x54 1,822 sq. ft.

PLATINUM SERIES

40' WIDE



PLATINUM SERIES 40x54 GSP 542K
 THREE BEDROOM, TWO BATH, GREAT ROOM 1,822 SQ. FT.



Columbia
 MANUFACTURED HOMES

1361 West 2nd Street, The Dalles, OR 97058 • Phone: 541-296-7070 • Toll free: 877 856-4663
 Email: homes@gorge.net • Website: www.columbiamfghomes.com



Golden West



THE PLATINUM STANDARD



PLATINUM STANDARD FEATURES

EXTERIOR FEATURES

- Energy Star / Eco-Green
- Shingles – 25yr
- Roof Load – 30#
- Eaves 10” (30’ wide) 14” (27’ wide)
- Roof Pitch – 3:12
- 4” Set-Back Frame
- Interior Walls, 2x4
- Exterior Wall, 2x6 16” OC
- Floor Joist, 2x8 16” OC
- Painted Front Door
- Hose Bib, (2) / GFI Exterior, (2)
- 9-Lite Rear Door (Per Plan)
- Lap / Board & Batt Siding T/O
- Window Trim 5/4”
- Double Gable 27’ (Per Model)
- Recessed Entry (Per Model)
- Whole House Wrap
- Low-E / Argon Dual Pane Windows

KITCHEN FEATURES

- Stainless Steel Appliance Package
- Stainless Steel Sink – 9” Deep
- Faucet Pull-Out Single Lever
- Walk-in Pantry (Per Model)
- Ribbed Pantry Door (Per Model)
- Glass Tile Back Splash (Level #3)
- Ceramic Edge
- Recessed Can Lights (Per Model)
- Fire Extinguisher

MASTER BATH FEATURES

- Lavy Cabinet Height 36”
- Towel and Tissue Holders
- Double China Sinks
- Bank of Drawers & Linen Storage
- Ceramic/Glass B-Splash (Level #1)
- Ceramic Edge
- 60” Fiberglass Shower w/ Enclosure
- Privacy Toilet Area (Per Model)
- Soaking Tub (Per Model)
- Shut-Off Valves, Toilets and Sinks

GUEST BATH(S) FEATURES

- Lavy Cabinet Height 36”
- Towel and Tissue Holders
- China Sink
- Bank of Drawers & Linen Storage
- Ceramic/Glass B-Splash (Level #1)
- Ceramic Edge
- 60” Fiberglass Tub/Shower
- Curved Shower Rod
- Shut-Off Valves, Toilets and Sinks

Due to our continuous improvement efforts we reserve the right to change standard features, prices, materials and specifications without notice or obligation.

UTILITY FEATURES

- AC Ready
- Water Heater 50gal
- Whole House Water Shut Off
- Perimeter Heat Ducts
- In-Floor Heat Duct Crossovers
- Sports Locker (Per Model)
- Craft/Desk Area (Per Model)
- Base Cabinet w/Laundry Tub
- Washer/Dryer O/H Cabinets
- Freezer O/H Cabinet (Per Model)
- Broom Cabinet (Per Model)
- Ceramic/Glass B-Splash (Level #1)
- Ceramic Edge

MISCELLANEOUS FEATURES

- Interior Doors – 36” (Where Available)
- Interior Doors - 2-Panel T/O
- Door Hardware – Nickel T/O
- Cabinets - Flat Panel Ashley Alder
- Cabinet Hardware – Nickel T/O
- Heavy Duty Roller Drawer Guides
- Toe Kick Heater Register
- Ceiling Air Returns – Bedrooms
- Wood Shelf and Pole
- Round Drywall Corners
- Baseboards T/O 4”
- Side Panels / Valance (Per Model)
- Carpet – New Day (FHA) 25oz
- Carpet Pad – 7#
- Ceiling Fan (1), (Living/Great Rm)
- Interior Lights, Nickel T/O