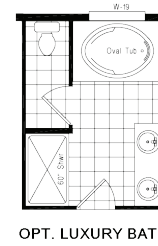
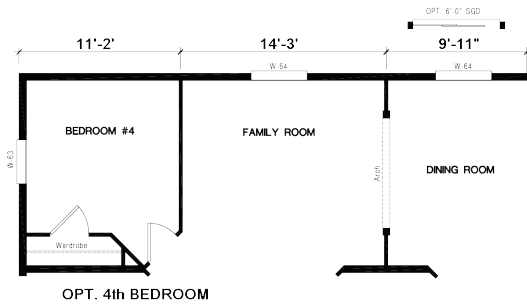
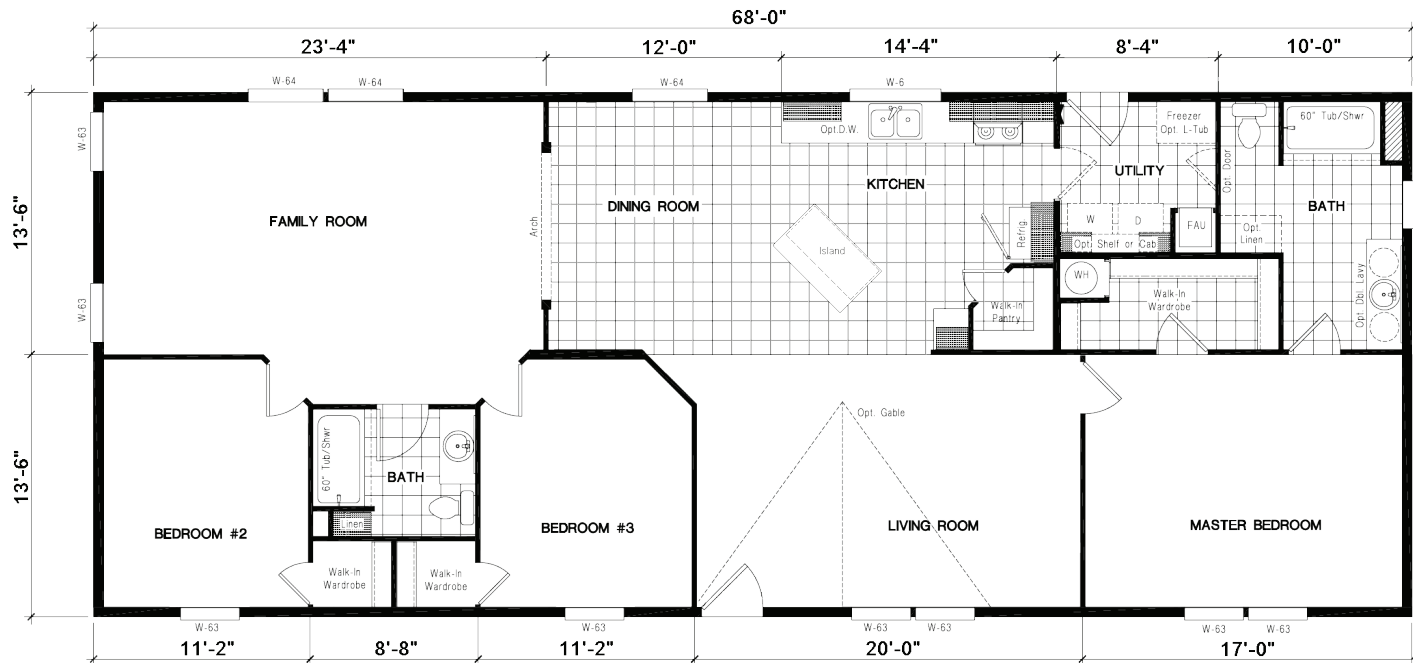


GS 686F 27x68 1,836 sq. ft.



Carmel Ridge





THE GOLD STANDARD



GOLD SERIES STANDARD FEATURES

CONSTRUCTION FEATURES

- 2x8 Floor Joists -16" O.C.
- 2x6 Exterior Walls -16" O.C.
- 4" Set-Back Frame
- 25 Year Fiberglass Comp Shingles
- 19/32" OSB T&G Floor Decking
- In-Floor Waste Plumbing
- Kiln Dried Framing Lumber
- 90" Sidewall (Multi Section Models)
- 30# Roof Load
- True 3/12 Roof Pitch (4:12 pitch single sections)
- Vaulted Ceilings (8' Flat single section homes)

EXTERIOR FEATURES

- LP Smart Panel Siding w/5/50 year warranty
- Whole House Moisture Barrier Wrap
- 2x8 Rough Sawn Eave Fascia
- 36" Front and Rear Doors
- Continuous Eave Soffit Venting
- Ridge Style Roof Venting
- 4" Window Trim
- Extended Eaves and Overhangs
- Exterior GFI Receptacle (1)

ENERGY SAVING FEATURES

- Low-E Dual Pane Windows
- R-30 Ceiling Insulation, Blown-in
- R-11 Exterior Wall Insulation
- R-22 Floor Insulation

INTERIOR FEATURES

- Tape and Texture Drywall Throughout
- Square Sheetrock Corners
- Brocade Style Ceiling Drywall Finish
- Flat Panel Cabinet Doors (MDF Frame)
- Mortised Passage Door Hinges
- No-Wax Vinyl Flooring (Kit, Utility, Baths)
- 5# Carpet Pad
- Mantra Carpet - 16oz.
- Bedroom Ceiling Lights (Double Bulb)
- Baseboard Molding in Lino Areas
- Metal Mini Blinds
- Laminated Counter Tops w/Splash
- Vented Wardrobe & Linen Shelving
- Nickel Hardware Throughout
- 2-Panel Interior Doors
- Wood Window Sills w/Apron Accent

KITCHEN FEATURES

- Whirlpool 18 cu ft Refrigerator
- Whirlpool Free Standing Range
- 30" Lighted Exhaust Fan over Range
- Porcelain Kitchen Sink
- Single Lever Faucet with Sprayer
- Fire Extinguisher Under Sink
- Can Lights (Qty. Per Model)
- Chandelier (Dining Rm)

SAFETY FEATURES

- Smoke Alarms, Bedrms & Living Areas
- Deadbolts on Front and Rear Doors
- All Copper Wiring
- Shut-Off Valves at Sinks and Toilets
- GFI Receptacle at all Wet Areas
- Porch Lights at each Exterior Entry
- Egress Windows in all Bedrooms

BATHROOM FEATURES

- 60" Tub/Shower Combo in each Bath
- Adjustable Shower Heads
- Acrylic Bathroom Sinks
- Lavy and Ceiling Lighting (Per Model)
- Exhaust Fans in each Bath
- Elongated Toilets
- Shut-Off Valves, Toilets and Sinks

UTILITY FEATURES

- All Electric Appliances
- 200 Amp Electrical Service
- Forced Air Elect Down Flow Furnace
- 40 Gallon Electric Water Heater
- Plumbed/Wire For Washer and Dryer
- Wired and Vented for Dryer
- Freezer Receptacle (Per Model)
- Receptacle at Fresh Water Inlet
- Whole House Shut-off Valve

Due to our continuous improvement efforts we reserve the right to change standard features, prices, materials and specifications without notice or obligation.