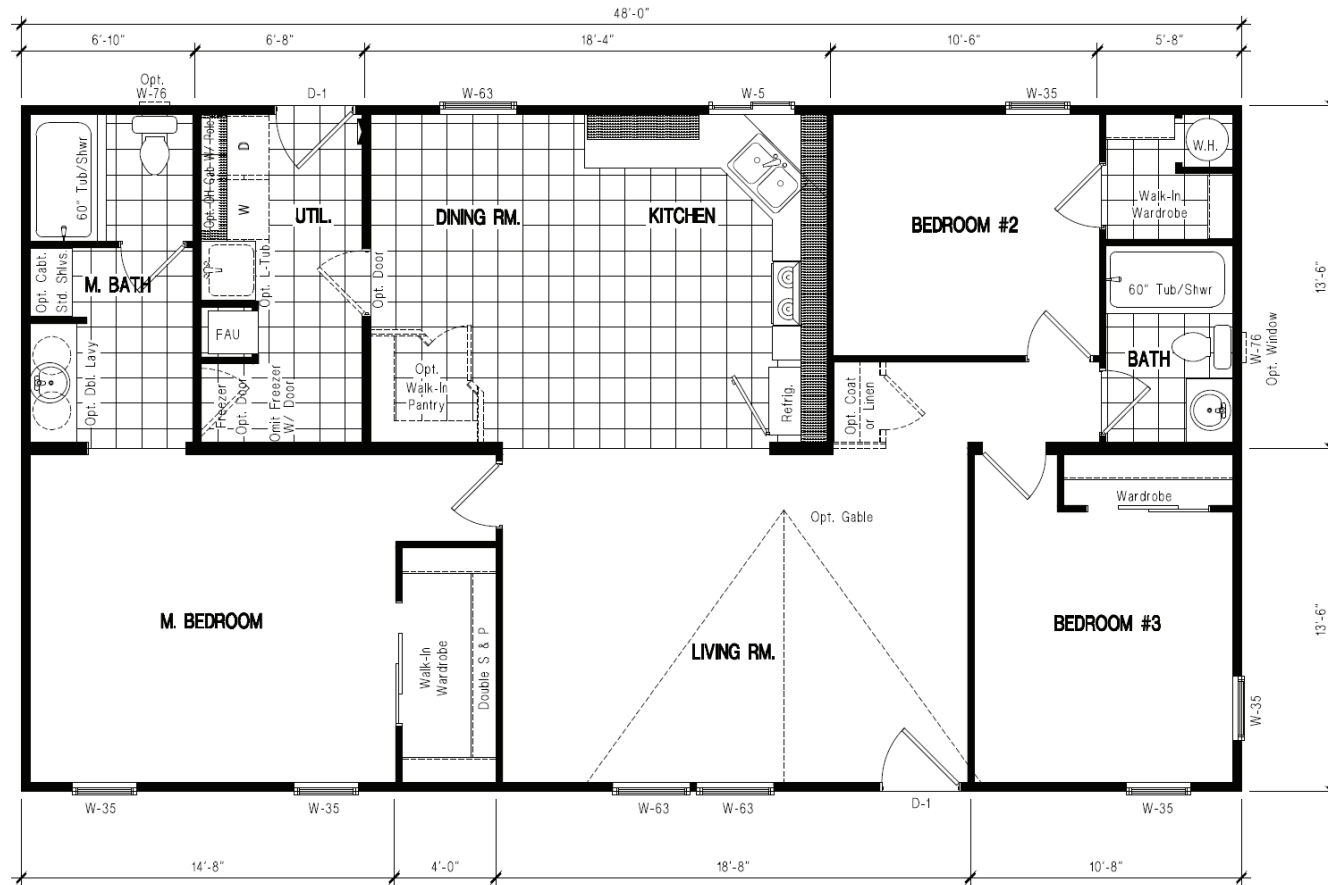
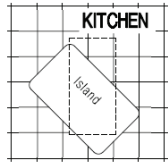


# DRM 482F 27x48 1,296 sq. ft.

# DREAM SERIES



## DREAM 48-2

THREE BEDROOM, TWO BATH - 1,296 SQ. FT.



# THE DREAM SERIES



## DREAM SERIES STANDARD FEATURES

### CONSTRUCTION FEATURES

- 2x6 Floor Joists -19" O.C.
- 2x4 Exterior Walls -16" O.C.
- 25 Year Fiberglass Comp Shingles
- 19/32" OSB T&G Floor Decking
- In-Floor Waste Plumbing
- Kiln Dried Framing Lumber
- 96" Sidewall (Flat Ceiling)
- 20# Roof Load
- True 3/12 Roof Pitch (4:12 pitch single sections)

### EXTERIOR FEATURES

- LP Smart Panel Siding w/5/50 year warranty
- 8" Cement Eave Fascia
- 36" Front and Rear Doors
- Continuous Eave Soffit Venting
- Ridge Style Roof Venting
- 4" Window Trim
- Exterior GFI Receptacle (1)

### ENERGY SAVING FEATURES

- Dual Pane Vinyl Framed Windows
- R-30 Ceiling Insulation
- R-11 Exterior Wall Insulation
- R-22 Floor Insulation
- Blown-in Ceiling Insulation

### INTERIOR FEATURES

- Tape and Texture Drywall Throughout
- Square Sheetrock Corners
- Brocade Style Ceiling Drywall Finish
- Cabinet Doors Flat Panel (MDF Frame)
- No-Wax Vinyl Flooring (Kitchen, Utility Room, Baths)
- 5# Carpet Pad
- Moxie 13oz Carpet
- Baseboard Molding in Lino Areas
- Laminated Counter Tops & Edge
- Vented Wardrobe & Linen Shelving
- Flat Panel Interior Doors
- Nickel Hardware Throughout

### KITCHEN FEATURES

- Whirlpool 18 cu ft Refrigerator
- Whirlpool Free Standing Range
- 30" Lighted Exhaust Fan over Range
- Stainless Steel Kitchen Sink
- Goose Neck Faucet with Sprayer
- Fire Extinguisher Under Sink
- Can Lights (Qty. Per Model)

### SAFETY FEATURES

- Smoke Alarms, Bdrms & Living Areas
- Deadbolts on Front and Rear Doors
- All Copper Wiring
- GFI Receptacle at all Wet Areas
- Porch Lights at each Exterior Entry
- Egress Windows in all Bedrooms

### BATHROOM FEATURES

- 60" Tub/Shower Combo in each Bath
- Adjustable Shower Heads
- Acrylic Bathroom Sinks
- Ceiling Lighting (Per Model)
- Exhaust Fans in each Bath
- Shut-Off Valves at Toilets
- Round Toilets

### UTILITY FEATURES

- All Electric Appliances
- 200 Amp Electrical Service
- Forced Air Elect Down Flow Furnace
- 40 Gallon Electric Water Heater
- Plumbed/Wire For Washer and Dryer
- Receptacle at Fresh Water Inlet
- Whole House Shut-off Valve